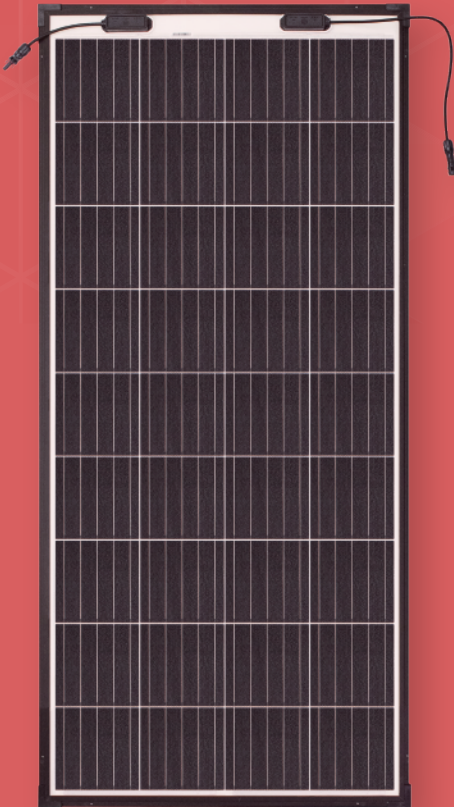


# eArc

## SMD185M-4X09UW

# 185Watt

## 36 Cell Monocrystalline Module



**Ultra-light:** Through replacement of glass and optimization of the frame, eArc weighs 70% less than conventional PV panels.



**Flexible:** eArc combines a unique, patented material with other industry-leading technologies to produce a flexible crystalline-silicon panel that can be installed on curved surfaces.



**Transportable:** eArc's thin frame and low weight significantly cuts transportation and freight costs.



**Installation-friendly:** eArc reduces installation cost by up to 50% through its re-engineered components, ease of handling and shorter installation time.



**Aesthetic:** Aesthetically designed panel that is PID-free, safe and emits no light pollution.



**Deployable:** eArc's lightweight, flexibility and customizability changes the way solar is deployed in the market and brings added value to special applications.



**Durable:** eArc panels are certified to withstand maximum test load (2400 Pascal), while special materials and stringent quality control ensure panel longevity.

POWER OUTPUT RANGE 180~185W

POWER TOLERANCE 0-5 W

**10 Year Product Warranty**

**25 Year Linear Power Warranty**



[www.sunman-energy.com](http://www.sunman-energy.com)

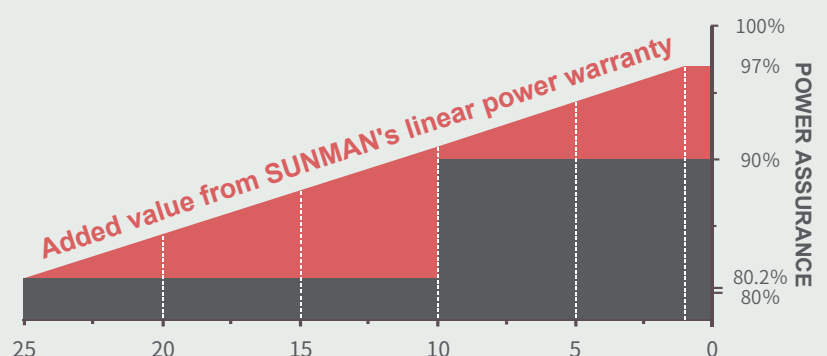


ULTRA-LIGHT & FLEXIBLE SOLAR PANEL

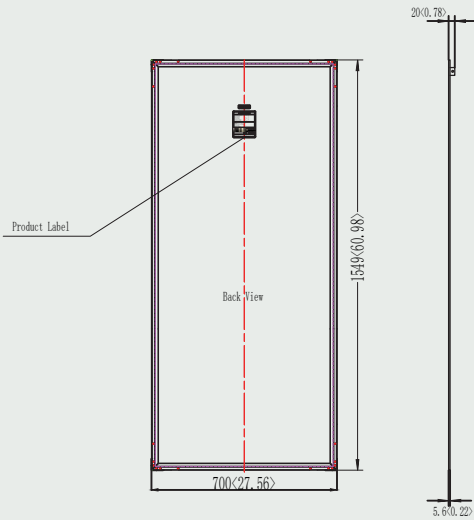
### LINEAR PERFORMANCE WARRANTY

CAUTION: Read installation manual before using the product.

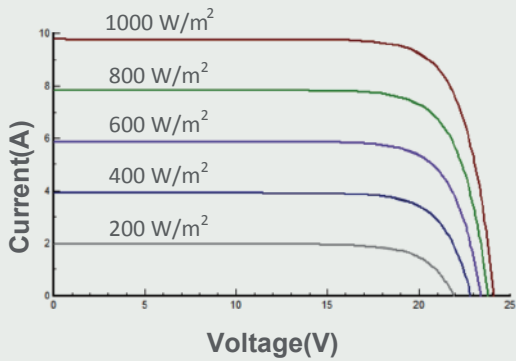
©2020 Sunman (zhenjiang) Co., Ltd. All rights reserved. Specifications included in this datasheet are subject to change without notice.



## DIMENSIONS

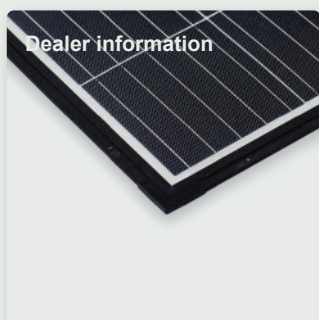


## I-V CURVE (185)



## TEMPERATURE CHARACTERISTICS

Nominal Module Operating Temperature(NOMT)	41±2 °C
Temperature Coefficient of P <sub>max</sub>	-0.38 %/°C
Temperature Coefficient of V <sub>oc</sub>	-0.28 %/°C
Temperature Coefficient of I <sub>sc</sub>	0.020 %/°C



SMDUW/IEC EN 2020A

## ELECTRICAL CHARACTERISTICS

STC	SMD180M-4X09UW	SMD185M-4X09UW
Maximum Power (P <sub>max</sub> )	180	185
Maximum Power Voltage (V <sub>mp</sub> )	19.6	19.9
Maximum Power Current (I <sub>mp</sub> )	9.19	9.30
Open-circuit Voltage (V <sub>oc</sub> )	23.9	24.1
Short-circuit Current (I <sub>sc</sub> )	9.69	9.78
Module Efficiency (%)	16.6	17.1
Operating Temperature	-40 °C to 85 °C	
Maximum System Voltage	1000 V DC (IEC)	
Maximum Series Fuse Rating	20 A	
Application Class	Class A	
Power Tolerance	0/+5 W	

STC: Irradiance 1000W/m<sup>2</sup>, Cell temperature 25 °C, AM=1.5. Tolerances of P<sub>max</sub>, V<sub>oc</sub> and I<sub>sc</sub> are within ±5%

NMOT	SMD180M-4X09UW	SMD185M-4X09UW
Maximum Power (P <sub>max</sub> )	135	139
Maximum Power Voltage (V <sub>mp</sub> )	18.2	18.4
Maximum Power Current (I <sub>mp</sub> )	7.42	7.56
Open-circuit Voltage (V <sub>oc</sub> )	22.4	22.6
Short-circuit Current (I <sub>sc</sub> )	7.83	7.97

NMOT: Irradiance 800W/m<sup>2</sup>, Ambient temperature 20 °C, AM=1.5, Wind speed 1 m/s.

## MECHANICAL CHARACTERISTICS

Solar Cell	Monocrystalline silicon (158.75mm)
No. of Cells	36 (4×9)
Module Dimensions	1549×700×5.6 mm
Weight	3.9kg
Backsheet	White
Frame	Black Anodized Aluminium Alloy
J-box	IP 68 rated
Output Cables	Photovoltaic technology cable 4.0 mm 2, (+)150 / (-)450 mm
Connector	MC4 compatible

## PACKAGING CONFIGURATION

	20' GP	40' HC
Module per pallet	50	50
Pieces per container	600	2100