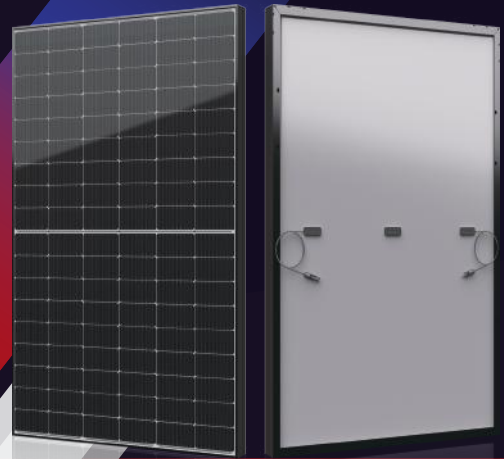


SIV SERIES

Small Changes, Big Accomplishments






390-405w



• SIV SERIES

Seraphim redefined the high-efficiency module series by integrating 182mm silicon wafers with multi-busbar and half-cut cell technologies. Seraphim panel combined creative technology effectively and extremely improved the module efficiency and power output.

• KEY FEATURES

-  Less mismatch to get more power
-  Less power loss by minimizing the shading impact
-  Competitive low light performance
-  3 times EL test to ensure best quality
-  Ideal choice for utility and commercial scale projects by reduced BOS and improve ROI.
- PVEL** Outstanding reliability proven by PVEL for stringent environment condition :
 - sand, acid, and alkali, hail stones,
 - 2400pa wind load and 5400pa snow load.
 - Anti-PID

• QUALITY SYSTEM

ISO19001 / ISO14001 / OHSAS18001

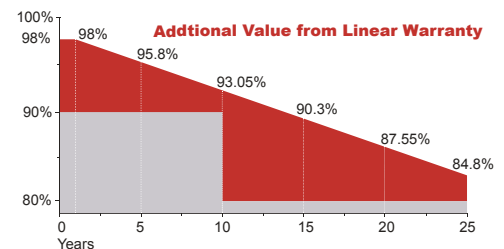
• PRODUCT CERTIFICATION



• INSURANCE

PICC

• WARRANTY



Guarantee on product material and workmanship



linear power output warranty



JIANGSU SERAPHIM SOLAR SYSTEM CO., LTD

Add: No.1-2, HengyaoRd, HenglinTown, Wujin District, 213000, Changzhou, China
 Tel: +86-519-69699879 Fax: +86-519-88786181 Email: info@seraphim-energy.com

