

# SOLAR PANEL ACCESSORIES



SA-101

SA-102

SA-103

SA-104

SA-202

PV-4

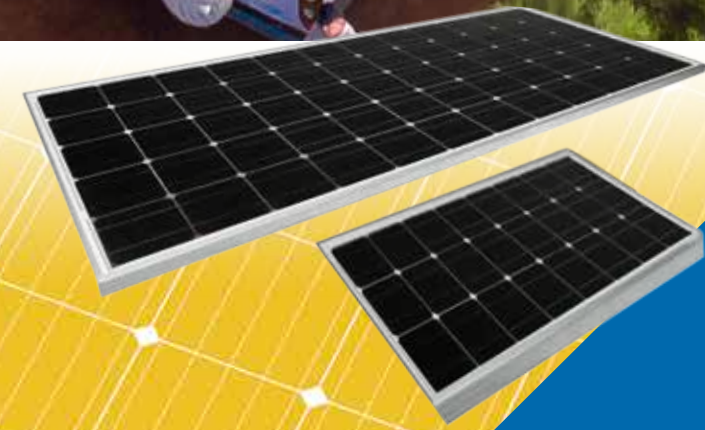
PV-4Y



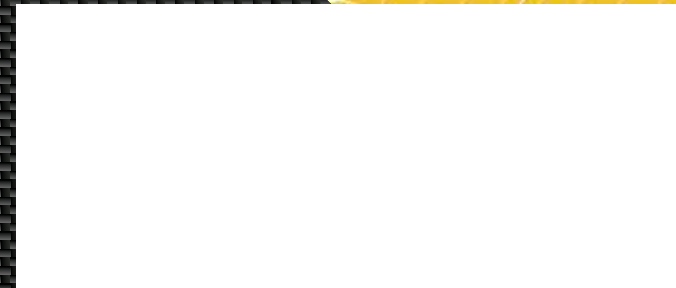
# FOLDING SOLAR PANEL

Technical Data - 12V Folding Panel NOTE: All ratings are +/- 3%. Dimensions are subject to change without notice.

Model	Pwr	Vmp	Imp	LWH Closed (mm)	LWH Open (mm)	Weight
FK-140G	140W	17.5V	8.00A	535 x 810 x 80	1085 x 810 x 40	12.6kg



Model	Qty	Description	L x W x H (mm)
SA-101	4	Corner bracket	150 x 150 x 65
SA-102	2	Medium side bracket	530 x 90 x 65
SA-103	2	Short side bracket	180 x 118 x 65
SA-104	2	Long side bracket	680 x 90 x 65
SA-202	1	Junction box	110 x 90 x 50
PV-4	2	Connector	NA
PV-4Y	2	Double adaptor	NA



# GLASS SOLAR PANELS

Voltech Solar Panels are made with high quality Monocrystalline cells, strengthened glass and have a tough aluminium frame. Our wide range of panels are perfectly suited for caravans, camper trailers, 4x4 vehicles, farming, mobile communications, mining and many more applications.

- **New lower profile models**
- **New compact and light weight models**
- **A Grade monocrystalline cells**
- **Trusted and reliable Voltech brand**
- **Mounting points on frame**
- **Hardened glass**
- **70-290W models with 900m cable**
- **100-290W with MC-4 type connectors**
- **24 Month Warranty**
- **Preferred by many Caravan & RV OEM's**

## Technical Data - 12V Models

Model	Pwr	Vmp	Imp	Voc	Isc	L x W x H (mm)	Weight
SP5M	5W	18.0V	0.28A	21.5V	0.30A	230 x 205 x 20	0.6kg
SP10M	10W	17.8V	0.56A	22.3V	0.59A	340 x 240 x 20	0.9kg
SP20M	20W	17.8V	1.12A	22.3V	1.20A	430 x 350 x 20	1.8kg
SP40M	40W	17.8V	2.24A	22.3V	2.39A	540 x 510 x 25	3.3kg
SP70M	70W	18.8V	3.72A	23.0V	3.95A	820 x 510 x 30	4.7kg
SP100ML	100W	18.4V	5.43A	22.5V	5.76A	1180 x 510 x 30	6.6kg
SP130ML	130W	18.9V	6.88A	23.1V	7.29A	1470 x 510 x 30	8.1kg
SP140M	140W	17.8V	7.86A	22.3V	8.45A	1180 x 670 x 30	8.4kg
SP160M	160W	17.7V	9.04A	22.6V	9.52A	1470 x 670 x 30	10.4kg
SP170M	170W	18.8V	9.05A	23.0V	9.59A	1470 x 670 x 30	11.0kg
SP180M	180W	19.0V	9.48A	23.5V	9.64A	1470 x 670 x 30	12.1kg
SP200M	200W	17.9V	11.14A	22.4V	11.1A	1580 x 810 x 35	14.2kg
SP200ML	200W	21.2V	9.44A	24.2V	13.2A	1640 x 670 x 30	13.0kg

**SP100ML**

**SP290M**

**SP160M**

**SP130ML**

**Voltech Solar Panels feature the latest busbar cells for higher efficiency.**

**High quality low profile 30mm aluminium frame.**

**Voltech Solar Panels are pre-wired with water proof MC-4 type connectors.**

## Technical Data - 24V Model

NOTE: All ratings are +/- 3%. Dimensions are subject to change without notice..

Model	Pwr	Vmp	Imp	Voc	Isc	L x W x H (mm)	Weight
SP290M	290W	31.8A	9.12A	39.2V	9.67A	1640 x 990 x 40	17.9kg

